

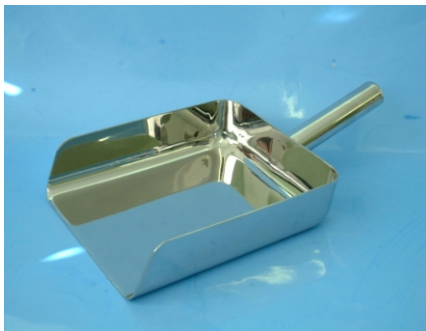


- 316L stainless steel
- Heavy duty construction
- Crevice free
- All corners radiused - for easy cleaning
- Satin finish

**316ss** ✓

Part No.	Nominal Capacity	Body Diameter	Body Length	Overall Length
A316-10	10ml	25mm	45mm	75mm
A316-50	50ml	38mm	70mm	110mm
A316-100	100ml	50mm	100mm	180mm
A316-750	750ml	95mm	210mm	330mm
A316-1100	1100ml	110mm	235mm	340mm
A316-1200	1200ml	125mm	195mm	305mm
A316-1700	1700ml	135mm	230mm	355mm
A316-2500	2500ml	185mm	215mm	320mm

## Square PharmaScoops



- 316L stainless steel
- Heavy duty construction
- Easy clean radiused corners
- Flat bottom design
- Crevice free
- Satin finish

**316ss** ✓

Part No.	Nominal Capacity	Body Width	Body Length	Body Height
A366-1500	1500ml	160mm	190mm	45mm

## Economy Scoops



- 304 stainless steel
- Light duty construction

Part No.	Nominal Capacity	Diameter
A304-120	0.12 litres	50mm
A304-450	0.45 litres	75mm
A304-1000	1 litres	105mm
A304-1500	1.5 litres	120mm
A304-2000	2 litres	150mm

**Note** - Economy Scoops are not crevice free and are not recommended for GMP applications