

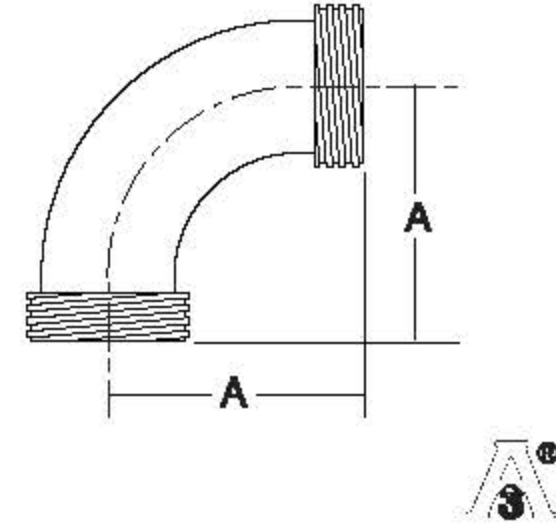


**Highland  
Equipment  
Inc.**  
STAINLESS STEEL EQUIPMENT

# Bevel Seat Elbows

## 2C - 90° Sweep Elbow

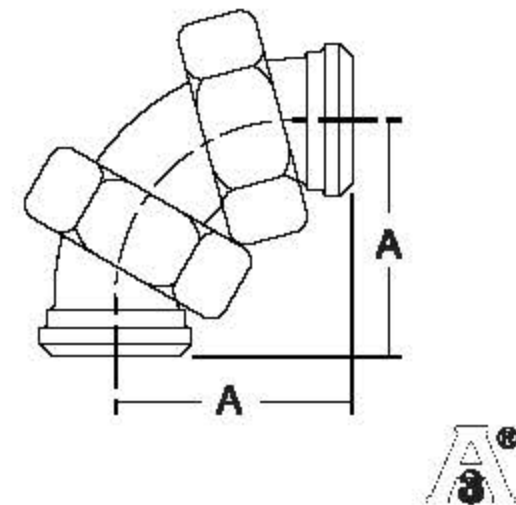
Size		A	
in	mm	in	mm
1	25.4	2	50.8
1½	38.1	2⅞	73.0
2	50.8	3 <sup>23</sup> / <sub>32</sub>	94.5
2½	63.5	4 <sup>27</sup> / <sub>32</sub>	123.0
3	76.2	5 <sup>29</sup> / <sub>32</sub>	150.0
4	101.6	8 <sup>1</sup> / <sub>16</sub>	204.8



Material Option: 304 (Finish Number 7)

## 2E - 90° Sweep Elbow

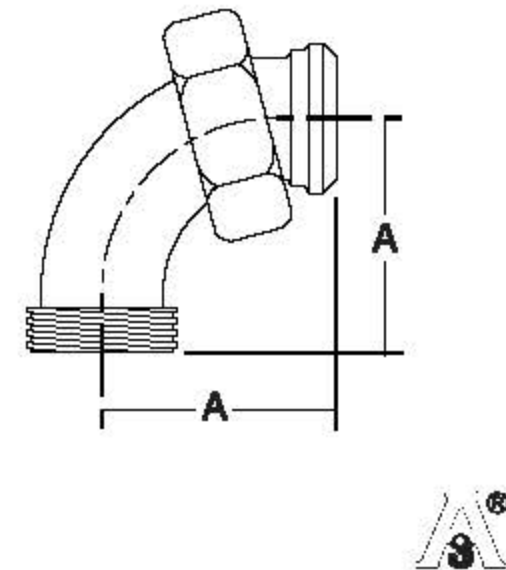
Size		A	
in	mm	in	mm
1	25.4	2	50.8
1½	38.1	2⅞	73.0
2	50.8	3 <sup>23</sup> / <sub>32</sub>	94.5
2½	63.5	4 <sup>27</sup> / <sub>32</sub>	123.0
3	76.2	5 <sup>29</sup> / <sub>32</sub>	150.0
4	101.6	8 <sup>1</sup> / <sub>16</sub>	204.8



Material Option: 304 (Finish Number 7)

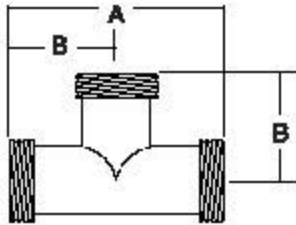
## 2F - 90° Sweep Elbow

Size		A	
in	mm	in	mm
1	25.4	2	50.8
1½	38.1	2⅞	73.0
2	50.8	3 <sup>23</sup> / <sub>32</sub>	94.5
2½	63.5	4 <sup>27</sup> / <sub>32</sub>	123.0
3	76.2	5 <sup>29</sup> / <sub>32</sub>	150.0
4	101.6	8 <sup>1</sup> / <sub>16</sub>	204.8



Material Option: 304 (Finish Number 7)

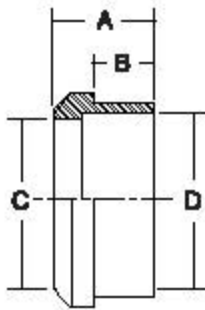
# Bevel Seat Tees & Ferrules



7 - Tee

Size		A		B	
in	mm	in	mm	in	mm
1	25.4	3%	92.1	1 <sup>3</sup> / <sub>16</sub>	46
1½	38.1	4%	120.7	2%	60.3
2	50.8	5%	141.3	2 <sup>5</sup> / <sub>16</sub>	70.6
2½	63.5	6%	161.9	3%	81.0
3	76.2	7	177.8	3½	88.9
4	101.6	9%	236.5	4 <sup>1</sup> / <sub>2</sub>	118.3

Material Option: 304 (Finish Number 7)



14 - Plain Recessed Ferrule

Size		A		B		C		D	
in	mm	in	mm	in	mm	in	mm	in	mm
1	25.4	¾	19.0	½	12.7	7%	22.2	1	25.4
1½	38.1	7%	22.2	5%	15.9	1%	34.9	1½	38.1
2	50.8	3 <sup>1</sup> / <sub>16</sub>	24.6	1 <sup>1</sup> / <sub>16</sub>	17.5	1%	47.6	2	50.8
2½	63.5	1 <sup>1</sup> / <sub>16</sub>	27.0	¾	19.0	2%	60.3	2½	63.5
3	76.2	1%	28.6	1 <sup>3</sup> / <sub>16</sub>	20.6	2%	73.0	3	76.2
4	101.6	1¾	31.8	1 <sup>5</sup> / <sub>16</sub>	23.8	3 <sup>5</sup> / <sub>16</sub>	97.2	4	101.6

Material Option: 304 (Finish Number 7)



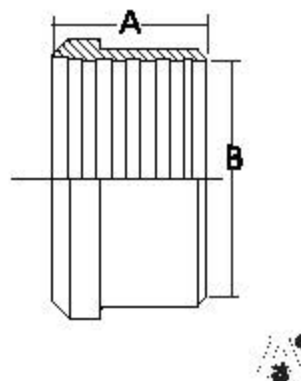
**Highland  
Equipment  
Inc.**

STAINLESS STEEL EQUIPMENT

## Bevel Seat Ferrules

### 14R - Plain Recessless Ferrule (Expanding Type)

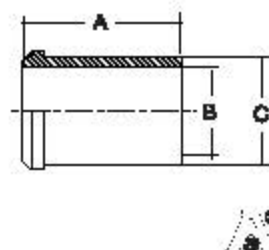
Size		A		B	
in	mm	in	mm	in	mm
1	25.4	$\frac{3}{4}$	19.0	1	25.4
1½	38.1	1½	28.6	1½	38.1
2	50.8	1½ <sup>5</sup> / <sub>16</sub>	33.3	2	50.8
2½	63.5	1¾	34.9	2½	63.5
3	76.2	1¾ <sup>5</sup> / <sub>16</sub>	36.5	3	76.2
4	101.6	1¾	38.1	4	101.6



Material Option: 304 (Finish Number 7)

### 14W - Plain Ferrule, Tank Spud (Heavy)

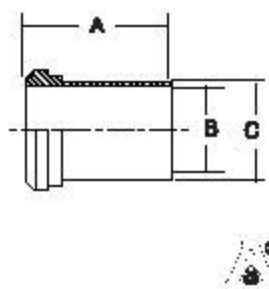
Size		A		B		C	
in	mm	in	mm	in	mm	in	mm
1	25.4	2¾	60.3	¾	22.2	1½ <sup>1</sup> / <sub>2</sub>	29.4
1½	38.1	2 <sup>17</sup> / <sub>32</sub>	64.3	1¾	34.9	1 <sup>9</sup> / <sub>16</sub>	42.5
2	50.8	2 <sup>25</sup> / <sub>32</sub>	70.6	1 <sup>7</sup> / <sub>8</sub>	47.6	2¾ <sup>1</sup> / <sub>16</sub>	55.6
2½	63.5	3¼ <sup>1</sup> / <sub>16</sub>	77.8	2¾	60.3	2 <sup>4</sup> / <sub>16</sub>	68.6
3	76.2	3 <sup>17</sup> / <sub>32</sub>	89.7	2 <sup>7</sup> / <sub>8</sub>	73.0	3¾ <sup>1</sup> / <sub>2</sub>	81.8
4	101.6	4¼ <sup>1</sup> / <sub>16</sub>	109.5	3 <sup>25</sup> / <sub>16</sub>	97.2	4¾	103.0



Material Option: 304 (Finish Number 7)

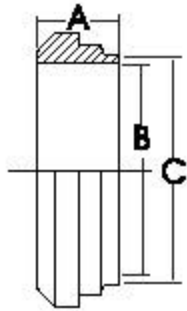
### 14WL - Plain Ferrule, Tank Spud (Light)

Size		A		B		C	
in	mm	in	mm	in	mm	in	mm
1	25.4	2	50.8	¾	22.2	1	25.4
1½	38.1	2¾	57.2	1¾	34.9	1½	38.1
2	50.8	2½	63.5	1 <sup>7</sup> / <sub>8</sub>	47.6	2	50.8
2½	63.5	2¾	69.9	2¾	60.3	2½	63.5
3	76.2	3	76.2	2 <sup>7</sup> / <sub>8</sub>	73.0	3	76.2
4	101.6	4	101.6	3 <sup>25</sup> / <sub>16</sub>	97.2	4	101.6



Material Option: 304 (Finish Number 7)

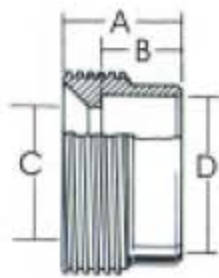
# Bevel Seat Ferrules



**14PRFS - Short Welding Ferrule**

Size		A		B		C	
in	mm	in	mm			in	mm
1	25.4	$\frac{1}{4}$	17.5	$\frac{7}{8}$	22.2	1	25.4
1½	38.1	$\frac{2}{3}$	18.3	$1\frac{1}{2}$	34.1	1½	38.1
2	50.8	$\frac{2}{3}$	18.3	1¾	47.6	2	50.8
2½	63.5	$\frac{2}{3}$	21.4	$2\frac{1}{2}$	59.5	2½	63.5
3	76.2	$\frac{2}{3}$	23.0	2¾	73.0	3	76.2
4	101.6	1¾	31.0	$3\frac{3}{4}$	81.0	4	101.6

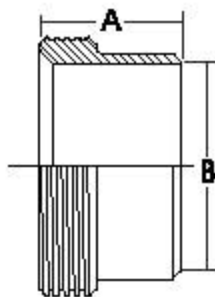
Material Option: 304 (Finish Number 7)



**15 - Threaded Recessed Ferrule**

Size		A		B		C		D	
in	mm	in	mm	in	mm	in	mm	in	mm
1	25.4	$\frac{1}{4}$	20.6	$\frac{1}{2}$	12.7	$\frac{7}{8}$	22.2	1	25.4
1½	38.1	$\frac{3}{8}$	22.2	$\frac{5}{8}$	15.9	1¾	34.9	1½	38.1
2	50.8	1¾	26.2	$\frac{1}{2}$	17.5	1¾	47.6	2	50.8
2½	63.5	1¾	28.6	$\frac{3}{4}$	19.0	2¾	60.3	2½	63.5
3	76.2	1¾	31.8	$\frac{1}{2}$	20.6	2¾	73.0	3	76.2
4	101.6	1¾	34.9	$\frac{1}{2}$	23.8	$3\frac{5}{8}$	97.2	4	101.6

Material Option: 304 (Finish Number 7)



**15R - Threaded Recessless  
Ferrule (Expanding Type)**

Size		A		B	
in	mm	in	mm	in	mm
1	25.4	$\frac{1}{4}$	20.6	1	25.4
1½	38.1	1¾	28.6	1½	38.1
2	50.8	1¾	34.9	2	50.8
2½	63.5	1¾	38.1	2½	63.5
3	76.2	1¾	41.3	3	76.2
4	101.6	1¾	41.3	4	101.6

Material Option: 304 (Finish Number 7)





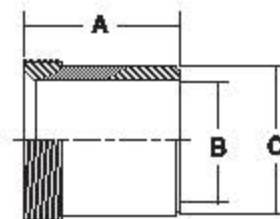
**Highland  
Equipment  
Inc.**

STAINLESS STEEL EQUIPMENT

## Bevel Seat Ferrules

### 15W - Threaded Ferrule, Tank Spud (Heavy)

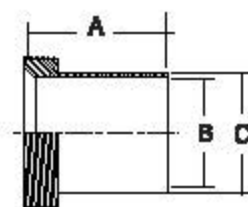
Size		A		B		C	
in	mm	in	mm	in	mm	in	mm
1	25.4	1½	38.1	¾	22.2	1¼	31.8
1½	38.1	1¾	41.3	1	34.9	1¾	44.5
2	50.8	1¾	44.5	1	47.6	2¼	68.7
2½	63.5	1¾	44.5	2	60.3	2	73.0
3	76.2	1¾	46.0	2	73.0	3	85.7
4	101.6	2	54.0	2¾	97.2	4¼	108.0



Material Option: 304 (Finish Number 7)

### 15WL - Threaded Ferrule, Tank Spud (Light)

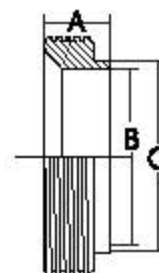
Size		A		B		C	
in	mm	in	mm	in	mm	in	mm
1	25.4	2	60.8	¾	22.2	1	25.4
1½	38.1	2¼	57.2	1	34.9	1½	38.1
2	50.8	2½	63.5	1	47.6	2	60.8
2½	63.5	2¾	69.9	2	60.3	2½	63.5
3	76.2	3	76.2	2	73.0	3	76.2
4	101.6	4	101.6	2¾	97.2	4	101.6



Material Option: 304 (Finish Number 7)

### 15TRFS - Short Welding Ferrule

Size		A		B		C	
in	mm	in	mm	in	mm	in	mm
1	25.4	¼	17.5	2½	21.4	1	25.4
1½	38.1	2/32	18.3	1¼	34.1	1½	38.1
2	50.8	2/32	18.3	1½	46.8	2	50.8
2½	63.5	2/32	21.4	2¼	59.5	2½	63.5
3	76.2	2/32	23.0	2¾	72.2	3	76.2
4	101.6	1¾	31.0	3¼	96.8	4	101.6



Material Option: 304 (Finish Number 7)

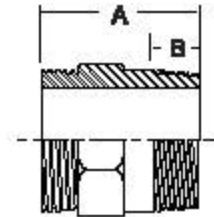


# Bevel Seat Adapters



## 21 - Adapters (Non 3A)

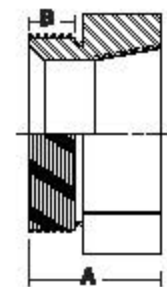
Size		A		B	
in	mm	in	mm	in	mm
1 x 1	25.4 x 25.4	2 <sup>3</sup> / <sub>4</sub>	57.2	2 <sup>1</sup> / <sub>2</sub>	16.7
1 <sup>1</sup> / <sub>2</sub> x 1 <sup>1</sup> / <sub>2</sub>	38.1 x 38.1	2 <sup>7</sup> / <sub>16</sub>	61.9	2 <sup>3</sup> / <sub>2</sub>	18.3
2 x 2	50.8 x 50.8	2 <sup>21</sup> / <sub>32</sub>	67.5	3 <sup>1</sup> / <sub>4</sub>	19.0
2 <sup>1</sup> / <sub>2</sub> x 2 <sup>1</sup> / <sub>2</sub>	63.5 x 63.5	3 <sup>3</sup> / <sub>2</sub>	83.3	1 <sup>9</sup> / <sub>16</sub>	29.0
3 x 3	76.2 x 76.2	3 <sup>1</sup> / <sub>2</sub>	88.9	1 <sup>13</sup> / <sub>16</sub>	27.6
4 x 4	101.6 x 101.6	3 <sup>13</sup> / <sub>16</sub>	96.8	1 <sup>5</sup> / <sub>16</sub>	33.3



**Material Option:** 304 (Finish Number 7)

## 22 - Adapters (Non 3A)

Size		A		B	
in	mm	in	mm	in	mm
1 x 1	25.4 x 25.4	2 <sup>1</sup> / <sub>16</sub>	52.4	9 <sup>1</sup> / <sub>2</sub>	14.3
1 <sup>1</sup> / <sub>2</sub> x 1 <sup>1</sup> / <sub>2</sub>	38.1 x 38.1	2 <sup>3</sup> / <sub>4</sub>	57.2	3 <sup>5</sup> / <sub>16</sub>	13.9
2 x 2	50.8 x 50.8	2 <sup>11</sup> / <sub>32</sub>	59.5	2 <sup>5</sup> / <sub>16</sub>	13.9
2 <sup>1</sup> / <sub>2</sub> x 2 <sup>1</sup> / <sub>2</sub>	63.5 x 63.5	2 <sup>3</sup> / <sub>2</sub>	53.2	4 <sup>5</sup> / <sub>16</sub>	17.1
3 x 3	76.2 x 76.2	2 <sup>3</sup> / <sub>16</sub>	55.6	3 <sup>1</sup> / <sub>4</sub>	19.0
4 x 4	101.6 x 101.6	2 <sup>5</sup> / <sub>8</sub>	66.7	2 <sup>1</sup> / <sub>2</sub>	22.2



**Material Option:** 304 (Finish Number 7)



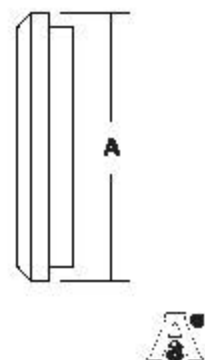
**Highland  
Equipment  
Inc.**

STAINLESS STEEL EQUIPMENT

## Bevel Seat Caps & Nuts

### 16A - Plain Cap

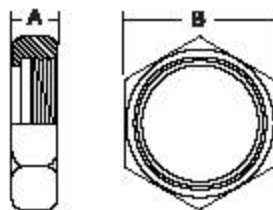
Size		A	
in	mm	in	mm
1	25.4	1 $\frac{1}{4}$ $\epsilon$	33.3
1 $\frac{1}{2}$	38.1	1 $\frac{3}{8}$ $\frac{1}{2}$	46.8
2	50.8	2 $\frac{3}{8}$	60.3
2 $\frac{1}{2}$	63.5	2 $\frac{3}{4}$ $\frac{1}{2}$	73.8
3	76.2	3 $\frac{1}{4}$ $\epsilon$	87.3
4	101.6	4 $\frac{1}{2}$	114.3



**Material Option:** 304 (Finish Number 7)

### 13H - Hex Union Nut, Non 3A

Size		A		B	
in	mm	in	mm	in	mm
1	25.4	2 $\frac{9}{32}$	23.0	1 $\frac{13}{16}$ $\epsilon$	46.0
1 $\frac{1}{2}$	38.1	3 $\frac{1}{32}$	24.6	2 $\frac{13}{32}$	61.1
2	50.8	1 $\frac{1}{4}$ $\epsilon$	27.0	3	76.2
2 $\frac{1}{2}$	63.5	1 $\frac{3}{4}$ $\epsilon$	30.2	3 $\frac{19}{32}$	91.3
3	76.2	1 $\frac{9}{32}$	32.5	4 $\frac{3}{4}$ $\epsilon$	106.4
4	101.6	1 $\frac{1}{2}$	38.1	5 $\frac{3}{4}$ $\epsilon$	138.1



**Material Option:** 304



**Highland Equipment**

136 The East Mall Toronto, Ontario M8Z 5V5

Tel: 416-236-9610 Fax: 416-236-9611

Toll Free Canada 1-800-956-5630

General Inquiries helcan@highlandequip.com

Visit us online at [www.highlandequip.com](http://www.highlandequip.com)