



C Series Pumps are in compliance with A3 standards and offer the following benefits:

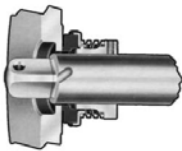
- Low costs
- Parts are 100% interchangeable with other leading brands
- 316L Stainless steel construction
- Stainless steel adapters are standard
- Optional NPT or flange connections

Model	Inlet	Outlet	Maximum Impeller
C-114	1.5" or 2"	1.5"	4"
C-216	2" or 2.5"	1.5"	6"
C-218	2" or 3"	1.5"	8"
C-328	3" or 4"	2"	8"
C-4410	4" or 6"	4"	10"

**Construction Materials:** All models are made of 316L stainless steel.

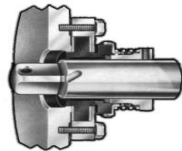
**Connections:** Sanitary clamp connections are standard. Options include bevel seat, NPT thread and flanged.

### Seal Specifications



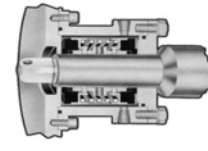
Type D External  
Balanced Seal

Well suited for multi-purpose use, this seal is designed to give long service life. Typical applications include: dairy products, cream style corn, tomatoes, beverages, etc. Also applicable for acid cleaning solutions and detergents.



Type DG Seal/Seat

This long lasting seal assembly utilizes standard Type D rotating seal components, plus choice of silicone carbide, ceramic or tungsten carbide stationary seal seat. For maximum corrosion resistance in pure water applications, with abrasive or non-lubricating products. Stationary seat is reversible, for quick changeover if one side is damaged. The standard material is silicone carbide.



Type E Water Cooled  
Balanced Double Seal

This water cooled balanced double seal can be pressurized to contain coolants or sealants which can be piped directly to drain. It is used in slurries, heavy duty vacuum applications (to 28" Hg), tacky products or products at temperatures up to 121°F.

Seal Materials	
Type D External balanced seal	Carbon/ Stainless Steel
Type DG External balanced seal with replaceable stationary seat	Carbon/Silicone Carbide Carbon/Ceramic Carbon/Tungsten Carbide
Type E Water cooled balanced double seal	Carbon/ Stainless Steel



136 The East Mall  
 Toronto, Ontario  
 M8Z 5V5  
 Tel: (416) 236-9610  
 Fax: (416) 236-9611  
 Toll Free: 1-800-956-5630



## Centrifugal Pumps

### LKH Premium Pumps



**LKH** – the premium centrifugal pump for most applications

When you need to move your product through a system gently and efficiently, the LKH centrifugal pump is your best solution. There are different versions available for special applications:



**LKHP-High Pressure** – built to handle high inlet pressure such as reverse osmosis mono-filtration.



**LKH-UltraPure** – for high-purity inlet pressure demands. Meets specifications for High-Purity-Water (HPW) and Water-for-Injection (WFI).



**LKH-Multistage** – For high outlet pressures, e.g. in breweries, reverse osmosis and ultra-filtration.

**LKHI** – built to handle intermediate inlet pressure. The enlarged inlets combined with an advanced impeller design result in unobstructed product flow and very low NPSH requirements. Designed for either Clean In Place (CIP) or manual cleaning, these quiet pumps are available with capacities up to 1,300 gal/min and/or pressures up to 525 head in feet of water (227 psi). All product contact parts are made of AISI 316L stainless steel. Polished models are USDA approved and exceed 3A standards, so you can be sure you have got the most hygienic, yet rugged, centrifugal pump possible.

Some of the benefits of the LKH centrifugal pump line are:

- Easy maintenance at low costs
  - Hygienic design
  - Gentle product treatment
- Identical shaft seals for standard range, LKH-5 to LKH-60
  - Easy conversion of shaft seals
- Low NPSH requirements means minimum risk of cavitation
  - Low power consumption and noise level
  - Low cost spare part stock

## Standard Duty Pumps SolidC



SolidC is a reliable, cost-effective centrifugal pump for simple transport duties within the working range up to 380 gallons/minute. All four pumps sizes in the SolidC range are fitted with the same superior long life shaft seal as pumps in the premium LKH range. You can stock just one type of seal for all sanitary pumps in your plant. Servicing SolidC is fast and simple. The front-loading shaft seal can be replaced in minutes. And with advanced hygienic design features, SolidC takes hygiene to a new level for standard duty pumps.

### The following are benefits of the SolidC:

- All product wetted parts are made of AISI 316L stainless steel
  - Complies with 3A, CE and has EHEDGE certification
    - Twice the seal life of a C series
- Self-centering stub shaft so no dial gauge is needed to achieve 001" T.I.R.
  - Standard 304 SS adaptor cylinder
- One seal fits all SolidC and most LKH sizes
  - Lower NPSH requirements.



136 The East Mall  
Etobicoke, Ontario  
M8Z 5V5  
Phone: (416) 236-9610  
Fax: (416) 236-9611  
Toll Free: 1-800-956-5630