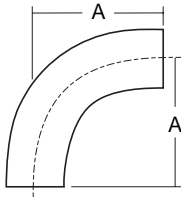


# FITTINGS

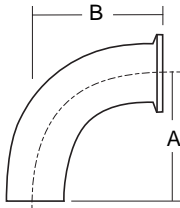


90° Tube Bend



Size	A (in)				
Tube O.D.	A2WCL & 2WCL	AL2S & L2S	TL2S		DT-7*
1/2			3	BC	3
3/4			3	BC	3
1	1 1/2	2 1/16	3	BC	3
1 1/2	2 1/4	2 15/16	4 1/2		3 3/4
2	3	4 1/16	5 3/4		4 3/4
2 1/2	3 3/4	5 3/16	5 3/4		5 1/2
3	4 1/2	6 5/16	6 1/2		6 1/4
4	6		8 1/2		8

\* Tri-Clover product that complies with BPE standard DT-7 is B2S.



90° Tube Bend, Tri-Clamp - One End

Size	A (in)				B (in)			
	AL2CM7	L2CM	TL2CM	DT-12*	AL2CM7	L2CM	TL2CM	DT-12*
1/2			3	3			3 1/2	1 5/8
3/4			3	3			3 1/2	1 5/8
1	2 1/16		3	3	2 9/16		3 1/2	2
1 1/2	2 15/16	2 15/16	4 1/2	3 3/4	3 7/16	3 7/16	5	2 3/4
2	4 1/16	4 1/16	5 3/4	4 3/4	4 9/16	4 9/16	6 1/4	3 1/2
2 1/2	5 3/16	5 3/16	5 3/4	5 1/2	5 11/16	5 11/16	6 1/4	4 1/4
3	6 5/16	6 5/16	6 1/2	6 1/4	6 13/16	6 13/16	7	5
4	8 1/2		8 1/2	8	9 1/8		9 1/8	6 5/8

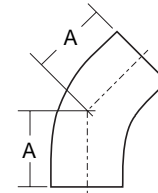
\* Tri-Clover product that complies with BPE standard DT-12 is B2CMW.

Note: BC denotes BPE compliant

# FITTINGS

## 45° Tube Bend

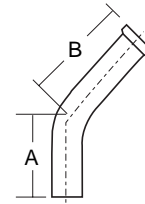
Size	A (in)			
Tube O.D.	A2WK & 2WK	AL2KS & L2KS	TL2KS	DT-8*
½			2¼ BC	2¼
¾			2¼ BC	2¼
1	⅝	1⅜ <sub>16</sub>	2¼ BC	2¼
1½	1 <sup>5</sup> / <sub>16</sub>	1⅝	3	2½
2	1¼	2 <sup>5</sup> / <sub>16</sub>	3¼	3
2½	1 <sup>9</sup> / <sub>16</sub>	3	3⅝	3⅝
3	1⅞	3 <sup>11</sup> / <sub>16</sub>	3⅞	3⅝
4	2½		5	4½



\* Tri-Clover product that complies with BPE standard DT-8 is B2KS.

## 45° Tube Bend Tri-Clamp - One End

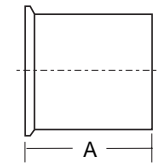
Size	A (in)		B (in)	
	TL2KM	DT-13*	TL2KM	DT-13*
½	2¼	2¼	2¾	1
¾	2¼	2¼	2¾	1
1	2¼	2¼	2¾	1⅞
1½	3	2½	3½	1 <sup>7</sup> / <sub>16</sub>
2	3¼	3	3¾	1¾
2½	3⅝	3⅝	4⅞	2 <sup>1</sup> / <sub>16</sub>
3	3⅞	3⅞	4⅞	2⅞
4	5	4½	5⅝	3⅞



\* Tri-Clover product that complies with BPE standard DT-13 is B2KMW.

## Tri-Clamp Ferrule

Size	A (in)			
Tube O.D.	14WMPs	AL14AM7 & L14AM	TLS14AM	DT-22*
½	½		1¾ BC	1¾
¾	½		1¾ BC	1¾
1	½	1⅞	1¾ BC	1¾
1½	½	1⅞	1¾ BC	1¾
2	½	1⅞	2¼ BC	2¼
2½	½	1⅞	2¼ BC	2¼
3	½	1⅞	2¼ BC	2¼
4	⅝	1⅞	2¼ BC	2¼

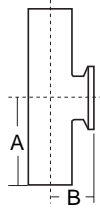


\* Tri-Clover product that complies with BPE standard DT-22 is BS14AM.

Note: BC denotes BPE compliant

# FITTINGS

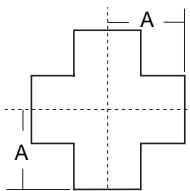
## Short Outlet Reducing Tee (Tri-Clamp Short Outlet)



Size	A (in)		B (in)		
	Tube O.D.	TL7RWWMS	DT-14*	TL7RWWMS	DT-14*
3/4 x 1/2		2 1/8	2	1 5/16	1
1 x 1/2		2 1/8	2 1/8	1 1/16	1 1/8
1 x 3/4		2 1/8	2 1/8	1 1/16	1 1/8
1 1/2 x 1/2		2 3/8	2 3/8	1 5/16	1 3/8
1 1/2 x 3/4		2 3/8	2 3/8	1 5/16	1 3/8
1 1/2 x 1		2 3/8 BC	2 3/8	1 3/8 BC	1 3/8
2 x 1/2		3 1/8	2 7/8	1 9/16	1 5/8
2 x 3/4		3 1/8	2 7/8	1 9/16	1 5/8
2 x 1		3 1/8	2 7/8	1 5/8	1 5/8
2 x 1 1/2		3 1/8	2 7/8	1 5/8	1 5/8
2 1/2 x 1		3 3/8	3 1/8	1 7/8	1 7/8
2 1/2 x 1 1/2		3 3/8	3 1/8	1 7/8	1 7/8
2 1/2 x 2		3 3/8	3 1/8	1 7/8	1 7/8
3 x 1		3 5/8	3 3/8	2 1/8	2 1/8
3 x 1 1/2		3 5/8	3 3/8	2 1/8	2 1/8
3 x 2		3 5/8	3 3/8	2 1/8	2 1/8
3 x 2 1/2		3 5/8	3 3/8	2 1/8	2 1/8
4 x 1		4 5/8	4 1/8	2 5/8	2 5/8
4 x 1 1/2		4 5/8	4 1/8	2 5/8	2 5/8
4 x 2		4 5/8	4 1/8	2 5/8	2 5/8
4 x 2 1/2		4 5/8	4 1/8	2 5/8	2 5/8
4 x 3		4 5/8	4 1/8	2 5/8	2 5/8

\* Tri-Clover product that complies with BPE standard DT-14 is B7RWWMS.

## Cross



Size	A (in)			
	9W	L9WWWW	TL9WWWW	DT-9B*
1/2			2 1/8	1 7/8
3/4			2 1/8	2
1	1 7/8	1 1/8	2 1/8 BC	2 1/8
1 1/2	2 1/4	1 21/32	2 3/8 BC	2 3/8
2	3	2 1/16	3 1/8	2 7/8
2 1/2	3	2 11/32	3 3/8	3 1/8
3	3 3/4	2 19/32	3 5/8	3 3/8
4	3 7/8	3 7/16	4 5/8	4 1/8

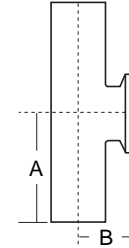
\* Tri-Clover product that complies with BPE standard DT-9B is B9WWWW.

Note: BC denotes BPE compliant

# FITTINGS

Short Outlet Tee, Ferrule One End

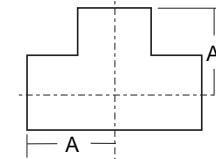
Size	A (in)		B (in)	
	Tube O.D.	TL7WWMS	DT-15*	DT-15*
1/2	2 1/8	1 7/8	1	1
3/4	2 1/8	2	1 1/8	1 1/8
1	2 1/8	2 1/8	1 1/16	1 1/8
1 1/2	2 3/8 BC	2 3/8	1 3/8 BC	1 3/8
2	3 1/8	2 7/8	1 5/8	1 5/8
2 1/2	3 3/8	3 1/8	1 7/8	1 7/8
3	3 5/8	3 3/8	2 1/8	2 1/8
4	4 5/8	4 1/8	2 3/4	2 3/4



\* Tri-Clover product that complies with BPE standard DT-15 is B7WWMS.

Tees

Size	A (in)			
	Tube O.D.	7W & A7W	L7WWW	DT-9A*
1/2			2 1/8	1 7/8
3/4			2 1/8	2
1	1 7/8	1 1/8	2 1/8 BC	2 1/8
1 1/2	2 1/4	1 21/32	2 3/8 BC	2 3/8
2	3	2 1/16	3 1/8	2 7/8
2 1/2	3	2 11/32	3 3/8	3 1/8
3	3 1/4	2 19/32	3 3/8	3 3/8
4	3 7/8	3 1/16	4 5/8	4 1/8



\* Tri-Clover product that complies with BPE standard DT-9A is B7WWW.

Note: BC denotes BPE compliant

# FITTINGS

Concentric Reducer

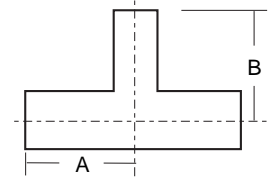


Size	A (in)				
Tube O.D.	31W	AL31	L31	TL31	DT-11B*
3/4 x 1/2			1	4 BC	4
1 x 1/2			1 1/2	4 1/2 BC	4 1/2
1 x 3/4	1		1	4 BC	4
1 1/2 x 1/2			2 1/2	5 1/2 BC	5 1/2
1 1/2 x 3/4	3		2	5 BC	5
1 1/2 x 1	2	2	2	5 BC	5
2 x 1	4	4		7 1/2	7 1/4
2 x 1 1/2	2	2	2	5 1/2	5 1/4
2 1/2 x 1 1/2	4	4	4	7 1/2	7 1/4
2 1/2 x 2	2	2	2	6	5 1/2
3 x 1 1/2	6	6		9 1/2	9 1/4
3 x 2	4	4	4	8	7 1/2
3 x 2 1/2	2	2	2	6	5 1/2
4 x 2	8		8	12 1/2	11 3/4
4 x 2 1/2	6		6	10 1/2	9 3/4
4 x 3	4	4	4	8 1/2	7 3/4

\* Tri-Clover product that complies with BPE standard DT-11B is B31.

Note: BC denotes BPE compliant

# FITTINGS



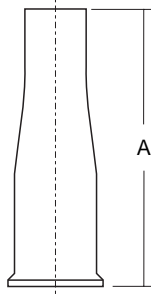
Reducing Tee

Size Tube O.D.	A (in)					B (in)				
	7WR	AL7RWWW7	L7RWWW	TL7RWWW	DT-10*	7WR	AL7RWWW7	L7RWWW	TL7RWWW	DT-10*
3/4 x 1/2				2 1/8	2				2 1/8	2
1 x 1/2				2 1/8 BC	2 1/8				2 1/8 BC	2 1/8
1 x 3/4	1 1/8			2 1/8 BC	2 1/8	2			2 1/8 BC	2 1/8
1 1/2 x 1/2				2 3/8 BC	2 3/8				2 3/8 BC	2 3/8
1 1/2 x 3/4	2 1/4			2 3/8 BC	2 3/8	2 1/4			2 3/8 BC	2 3/8
1 1/2 x 1	2 1/4	1 21/32	1 21/32	2 3/8	2 3/8	2 1/8	1 3/8	1 3/8	2 1/2	2 3/8
2 x 1/2				3 1/8	2 7/8				2 3/4	2 5/8
2 x 3/4				3 1/8	2 7/8				2 3/4	2 5/8
2 x 1	3	2 1/16		3 1/8	2 7/8	2 3/8	1 5/8		2 3/4	2 5/8
2 x 1 1/2	3	2 1/16	2 1/16	3 1/8	2 7/8	2 1/2	1 29/32	1 29/32	2 3/4	2 5/8
2 1/2 x 1/2				3 3/8	3 1/8				3	2 7/8
2 1/2 x 3/4				3 3/8	3 1/8				3	2 7/8
2 1/2 x 1				3 3/8	3 1/8				3	2 7/8
2 1/2 x 1 1/2	3	2 11/32		3 3/8	3 1/8	2 3/4	2 5/32		3	2 7/8
2 1/2 x 2	3	2 11/32	2 11/32	3 3/8	3 1/8	3 1/4	2 5/16	2 5/16	3 1/2	2 7/8
3 x 1/2				3 5/8	3 3/8				3 1/4	3 1/8
3 x 3/4				3 5/8	3 3/8				3 1/4	3 1/8
3 x 1				3 5/8	3 3/8				3 1/4	3 1/8
3 x 1 1/2	3 3/4	2 19/32		3 5/8	3 3/8	3	2 13/32		3 1/4	3 1/8
3 x 2	3 3/4	2 19/32	2 19/32	3 5/8	3 3/8	3 1/2	2 9/16	2 9/16	3 3/4	3 1/8
3 x 2 1/2	3 3/4	2 19/32	2 19/32	3 5/8	3 3/8	3 1/4	2 19/32	2 19/32	3 3/4	3 1/8
4 x 1/2				4 5/8	4 1/8				3 3/4	3 5/8
4 x 3/4				4 5/8	4 1/8				3 3/4	3 5/8
4 x 1				4 5/8	4 1/8				3 3/4	3 5/8
4 x 1 1/2				4 5/8	4 1/8				3 3/4	3 5/8
4 x 2	3 7/8	3 7/16		4 5/8	4 1/8	4	3 1/16		4 1/4	3 7/8
4 x 2 1/2	3 7/8			4 5/8	4 1/8	3 3/4			4 1/4	3 7/8
4 x 3	3 7/8	3 7/16		4 5/8	4 1/8	3 3/4	3 3/32		4 1/4	3 7/8

\* Tri-Clover product that complies with BPE standard DT-10 is B7RWWW.

Note: BC denotes BPE compliant

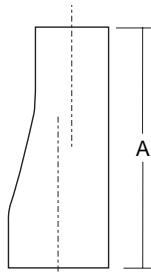
# FITTINGS



Concentric Reducer, Ferrule One Side

Size Tube O.D.	A (in)	
	TL31M	DT-26A*
3/4 x 1/2	4 1/2	3
1 x 1/2	5	3 1/2
1 x 3/4	4 1/2	3
1 1/2 x 1/2	6	4 1/2
1 1/2 x 3/4	5 1/2	4
1 1/2 x 1	5 1/2	4
2 x 1	8	6
2 x 1 1/2	6	4
2 1/2 x 1 1/2	8	6
2 1/2 x 2	6 1/2	4 1/4
3 x 1 1/2	10	8
3 x 2	8 1/2	6 1/4
3 x 2 1/2	6 1/2	4 1/4
4 x 2	13 1/8	10 3/8
4 x 2 1/2	11 1/8	8 3/8
4 x 3	9 1/8	6 3/8

\* Tri-Clover product that complies with BPE standard DT-26A is **B31M**.



Eccentric Reducer

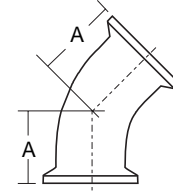
Size Tube O.D.	A (in)				
	32W	AL32	L32	TL32	DT-11A*
3/4 x 1/2			1	4 BC	4
1 x 1/2			1 1/2	4 1/2 BC	4 1/2
1 x 3/4	1		1	4 BC	4
1 1/2 x 1/2			2 1/2	5 1/2 BC	5 1/2
1 1/2 x 3/4	3		2	5 BC	5
1 1/2 x 1	2	2	2	5 BC	5
2 x 1	4	4		7 1/2	7 1/4
2 x 1 1/2	2	2	2	5 1/2	5 1/4
2 1/2 x 1 1/2	4	4	4	7 1/2	7 1/4
2 1/2 x 2	2	2	2	6	5 1/2
3 x 1 1/2	6	6		9 1/2	9 1/4
3 x 2	4	4	4	8	7 1/2
3 x 2 1/2	2	2	2	6	5 1/2
4 x 2	8		8	12 1/2	11 3/4
4 x 2 1/2	6		6	10 1/2	9 3/4
4 x 3	4	4	4	8 1/2	7 3/4

\* Tri-Clover product that complies with BPE standard DT-11A is **B32**.  
Note: BC denotes BPE compliant

# FITTINGS

## 45° Elbow

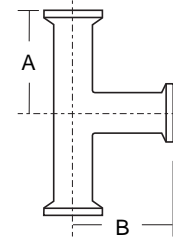
Size	A (in)		
Tube O.D.	A2KMP	2KMP	DT-17*
½		2¾	1
¾		2¾	1
1	1⅛ BC	1⅛ BC	1⅛
1½	1⅞ BC	1⅞ BC	1⅞
2	1¾ BC	1¾ BC	1¾
2½	2¼ BC	2¼ BC	2¼
3	2⅝ BC	2⅝ BC	2⅝
4	3⅛ BC	3⅛ BC	3⅛



\* Tri-Clover product that complies with BPE standard DT-17 is B2KMP.

## Tee, with Tri-Clamps

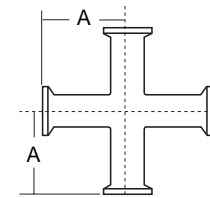
Size	A (in)			B (in)		
	A7MP	7MP	DT-18A*	A7MP	7MP	DT-18A*
½		2⅝	2¼		2⅝	2¼
¾		2⅝	2⅝		2⅝	2⅝
1	2⅝	2⅝	2⅝	2⅝	2⅝	2⅝
1½	2¾	2¾	2⅞	2¾	2¾	2⅞
2	3½	3½	3⅝	3½	3½	3⅝
2½	3½	3½	3⅝	3½	3½	3⅝
3	3¾	3¾	3⅞	3¾	3¾	3⅞
4	4½	4½	4¾	4½	4½	4¾



\* Tri-Clover product that complies with BPE standard DT-18A is B7MP.

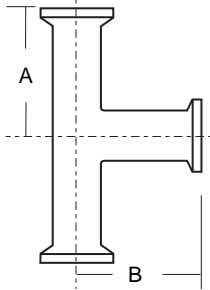
## Cross, with Tri-Clamps

Size	A (in)	
Tube O.D.	9MP	DT-18B*
½	2⅝	2¼
¾	2⅝	2⅝
1	2⅝	2⅝
1½	2¾	2⅞
2	3½	3⅝
2½	3½	3⅝
3	3¾	3⅞
4	4½	4¾



\* Tri-Clover product that complies with BPE standard DT-18B is B9MP.

Note: BC denotes BPE compliant



Reducing Tee, with Tri-Clamps

Size Tube O.D.	A (in)		B (in)	
	7RMP	DT-19*	7RMP	DT-19*
3/4 x 1/2	2 5/8	2 1/2	2 5/8	2 1/2
1 x 1/2	2 5/8 BC	2 5/8	2 5/8 BC	2 5/8
1 x 3/4	2 5/8 BC	2 5/8	2 5/8 BC	2 5/8
1 1/2 x 1/2	2 7/8 BC	2 7/8	2 7/8 BC	2 7/8
1 1/2 x 3/4	2 7/8 BC	2 7/8	2 7/8 BC	2 7/8
1 1/2 x 1	2 5/32	2 7/8	1 7/8	2 7/8
2 x 1/2	3 5/8	3 3/8	3 1/4	3 1/8
2 x 3/4	3 5/8	3 3/8	3 1/4	3 1/8
2 x 1	2 9/16	3 3/8	2 1/8	3 1/8
2 x 1 1/2	2 9/16	3 3/8	2 13/32	3 1/8
2 1/2 x 1/2	3 7/8	3 5/8	3 1/2	3 3/8
2 1/2 x 3/4	3 7/8	3 5/8	3 1/2	3 3/8
2 1/2 x 1	2 27/32	3 5/8	2 3/8	3 3/8
2 1/2 x 1 1/2	2 27/32	3 5/8	2 21/32	3 3/8
2 1/2 x 2	2 27/32	3 5/8	2 13/16	3 3/8
3 x 1/2	4 1/8	3 7/8	3 3/4	3 5/8
3 x 3/4	4 1/8	3 7/8	3 3/4	3 5/8
3 x 1	3 3/32	3 7/8	2 5/8	3 5/8
4 x 1/2	5 1/4	4 3/4	4 1/4	4 1/8

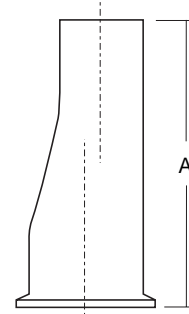
\* Tri-Clover product that complies with BPE standard DT-19 is B7RMP.

Note: BC denotes BPE compliant

# FITTINGS

**Eccentric Reducer, Ferrule One Side**

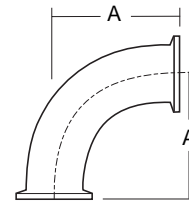
Size	A (in)	
	Tube O.D.	DT-26B*
3/4 x 1/2	4 1/2	3
1 x 1/2	5	3 1/2
1 x 3/4	4 1/2	3
1 1/2 x 1/2	6	4 1/2
1 1/2 x 3/4	5 1/2	4
1 1/2 x 1	5 1/2	4
2 x 1	8	6
2 x 1 1/2	6	4
2 1/2 x 1 1/2	8	6
2 1/2 x 2	6 1/2	4 1/4
3 x 1 1/2	10	8
3 x 2	8 1/2	6 1/4
3 x 2 1/2	6 1/2	4 1/4
4 x 2	13 1/8	10 3/8
4 x 2 1/2	11 1/8	8 3/8
4 x 3	9 1/8	6 3/8



\* Tri-Clover product that complies with BPE standard DT-26B is B32M.

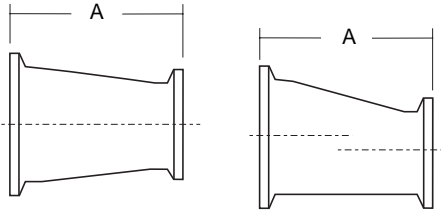
**90° Elbow, Ferrule Two Side**

Size	A (in)		
	A2CMP	2CMP	DT-16*
1/2		3 1/2	1 5/8
3/4		3 1/2	1 5/8
1	2 BC	2 BC	2
1 1/2	2 3/4 BC	2 3/4 BC	2 3/4
2	3 1/2 BC	3 1/2 BC	3 1/2
2 1/2	4 1/4 BC	4 1/4 BC	4 1/4
3	5 BC	5 BC	5
4	6 5/8 BC	6 5/8 BC	6 5/8



\* Tri-Clover product that complies with BPE standard DT-16 is B2CMP.

Note: BC denotes BPE compliant



Concentric & Eccentric Reducers with Tri-Clamp

Size	A (in)			A (in)		
	Tube O.D.	31-14MP	32-14MP		DT-21A*	DT-21B*
3/4 x 1/2	2	BC	2	BC	2	2
1 x 1/2	2 1/2	BC	2 1/2	BC	2 1/2	2 1/2
1 x 3/4	2	BC	2	BC	2	2
1 1/2 x 1/2	3 1/2	BC	3 1/2	BC	3 1/2	3 1/2
1 1/2 x 3/4	4	BC	4	BC	3	3
1 1/2 x 1	3	BC	3	BC	3	3
2 x 3/4	4 1/4		4 1/4		5	5
2 x 1	5	BC	5	BC	5	5
2 x 1 1/2	3	BC	3	BC	3	3
2 1/2 x 1 1/2	5	BC	5	BC	5	5
2 1/2 x 2	3	BC	3	BC	3	3
3 x 1 1/2	7	BC	7	BC	7	7
3 x 2	5	BC	5	BC	5	5
3 x 2 1/2	3	BC	3	BC	3	3
4 x 2	9 1/8	BC	9 1/8	BC	9 1/8	9 1/8
4 x 2 1/2	7 1/8	BC	7 1/8	BC	7 1/8	7 1/8
4 x 3	5 1/8	BC	5 1/8	BC	5 1/8	5 1/8

\* Tri-Clover product that complies with BPE standard DT-21A is B31-14MP.

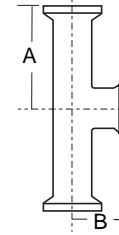
Tri-Clover product that complies with BPE standard DT-21B is B32-14MP.

Note: BC denotes BPE compliant

# FITTINGS

Short Outlet Reducing Tee

Size	A (in)		B (in)	
	7RMPS	DT-20*	7RMPS	DT-20*
3/4 x 1/2	2 5/8	2 1/2	1 5/16	1
1 x 1/2	2 5/8	2 5/8	1 1/16	1 1/8
1 x 3/4	2 5/8	2 5/8	1 1/16	1 1/8
1 1/2 x 1/2	2 7/8	2 7/8	1 5/16	1 3/8
1 1/2 x 3/4	2 7/8	2 7/8	1 5/16	1 3/8
1 1/2 x 1	2 5/32	2 7/8	1 3/8	1 3/8
2 x 1/2	3 5/8	3 3/8	1 9/16	1 5/8
2 x 3/4	3 5/8	3 3/8	1 9/16	1 5/8
2 x 1	2 9/16	3 3/8	1 5/8	1 5/8
2 x 1 1/2	2 9/16	3 3/8	1 5/8	1 5/8
2 1/2 x 1/2	3 7/8	3 3/8	1 13/16	1 7/8
2 1/2 x 3/4	3 7/8	3 5/8	1 13/16	1 7/8
2 1/2 x 1	2 27/32	3 5/8	1 7/8	1 7/8
2 1/2 x 1 1/2	2 27/32	3 5/8	1 7/8	1 7/8
2 1/2 x 2	2 27/32	3 5/8	1 7/8	1 7/8
3 x 1/2	4 1/8	3 7/8	2 1/16	2 1/8
3 x 3/4	4 1/8	3 7/8	2 1/16	2 1/8
3 x 1	3 3/32	3 7/8	2 1/8	2 1/8
3 x 1 1/2	3 3/32	3 7/8	2 1/8	2 1/8
3 x 2	3 3/32	3 7/8	2 1/8	2 1/8
3 x 2 1/2	3 3/32	3 7/8	2 1/8	2 1/8
4 x 1/2	5 1/4	4 3/4	2 9/16	2 5/8
4 x 3/4	5 1/4	4 3/4	2 9/16	2 5/8
4 x 1	4 1/16	4 3/4	2 5/8	2 5/8
4 x 1 1/2	4 1/16	4 3/4	2 5/8	2 5/8
4 x 2	4 1/16	4 3/4	2 5/8	2 5/8
4 x 2 1/2	4 1/16	4 3/4	2 5/8	2 5/8
4 x 3	4 1/16	4 3/4	2 5/8	2 5/8



\* Tri-Clover product that complies with BPE standard DT-20 is B7RMPS.

Note: BC denotes BPE compliant